



# mci

## Newsletter

Memphremagog Conservation Inc.

JUNE 2018

Photo : Photohélico

# Message From our Presidents

## 50 YEARS, WHAT AN INCREDIBLE JOURNEY!

My good friends,

Last summer, Memphremagog Conservation celebrated the 50<sup>th</sup> anniversary of its founding with a multitude of environmental, social and educational activities. This important milestone has allowed us to step back and review the work done since our founding and to look forward to future activities. We are struck by the dynamic vision of our three founders, and the challenging work of the volunteers the organization has counted on since.

We remember that, faced with the poor state of the lake in 1967, our founders decided to act. The actions they took became MCI and its volunteers. MCI was one of the first environmental groups created in Québec, before Greenpeace, before the provincial and federal environment departments, even before the tabling of the United Nations' Bruntland report. In short, we are precursors of the 'Think globally, act locally' mantra.

MCI became a force to be reckoned with, bringing together people of good faith: permanent and seasonal residents, anglophones and francophones, Americans and Canadians, dark greens and pale greens.

It's been a hard journey for MCI: limited financial resources, two countries, a very big lake, multiple environmental issues, new environmental problems yet unknown, and a multitude of jurisdictions to navigate regarding lake issues. It is thanks to the tenacity, vision and devotion of our volunteers that we have been able to make progress on the environmental front in our corner of the world. Mission accomplished!

The members, volunteers, boards of directors, donors and patrollers who have been with us over the past 50 years will remember the epic battles that we have had to fight, the repeated requests to improve the laws and regulations covering lakes.

MCI learned to take firm positions over the years in many debates. As well, MCI has been able to present politicians with scientifically verified solutions. MCI has been and will continue to be an important player in the various legislations that affect the lake.

Here at MCI, we are proud of the work we have done over the past 50 years with your support. We are determined to continue to embrace the vision of our founders to valiantly defend this common good for which we are all responsible.

The next generation is here! They are young, dynamic, passionate, educated and very competent.

Your board of directors remains at your service.

We look forward to seeing you at our next annual general meeting.

Thank you for your support. 🍀

**Robert Benoit**  
MCI Co-President

## Adoption of MCI's bylaws

Among the many activities that took place to mark MCI's 50th anniversary, the Board of Directors reviewed and updated its bylaws. A special general meeting of members will take place July 14, at 9 AM in Georgeville before the annual general meeting to approve them. The bylaws will be available for consultation on MCI's web site as of June 14, 2018. Please address all questions and comments to the Board of Directors via email at [info@memphremagog.org](mailto:info@memphremagog.org) no later than June 30, 2018.

# Summary

Message from our presidents .....	1-2
2018 Patrol .....	3
A second nature reserve for Memphremagog Conservation! .....	4
Healthy Fitch Bay Project .....	6
My road, my lake, my responsibility! .....	7
MCI Board of Directors 2017-2018....	7
Project studying the water quality of Lake Memphremagog with the International Joint Committee .....	8
Controlling exotic invasive species: get involved! .....	8
MCI recognized for its environmental work! .....	9
The 2017 MCI Gordon Kohl Memorial Award Presentation to the Penfield Family .....	9
A special thanks to Will Abbott and his family .....	10
Summer 2018 calendar .....	10

P. O. Box 70, Magog (Quebec) J1X 3W7  
Tel.: 819 620-3939

[www.memphremagog.org](http://www.memphremagog.org)  
Email: [info@memphremagog.org](mailto:info@memphremagog.org)

**Newsletter manager**  
Catherine Roy

**Revision**  
Catherine Roy, Ariane Orjikh,  
Gisèle Lacasse Benoit, Peter Lepine

**Translation**  
Peter Lepine, Catherine Roy

**Graphic Design**  
[www.comma.ca](http://www.comma.ca)

**Printing**  
Impart Litho Imprimeur

**Photos**  
Photos from the MCI archives, unless indicated  
otherwise.



## Message From our Presidents (continued)

### HUGE CHALLENGES TO OVERCOME

With our years of experience, an evolving team and a new generation of volunteers, MCI is looking forward to the coming years with enthusiasm.

There are no givens in environmental protection. The challenges, at the level of the organization and its membership as well as at the level of the environment are numerous.

As with many organizations, to continue to evolve and to grow and diversify our membership, MCI is constantly seeking donations, subsidies and fruitful partnerships with other environmental organizations. Efforts are needed to carry out our communication strategy. We must be creative in our approach to reach, sensitize and mobilize a population that is concerned with the quality of the environment, but also is being solicited left and right, and is sometimes hard to interest in our cause. At the level of the environment, the challenges are also numerous. Urbanization, shoreline development, certain agricultural and forestry practices, as well as certain navigation practices continue to degrade, even destroy, our natural landscapes. Climate change is also a basic concern. Causing increasingly severe phenomena, climate change is having increasingly severe impacts on the environment. By putting greater pressure on our ecosystems, it is resulting in the spread of exotic invasive species, among other effects. This can be seen with the increasing spread of Eurasian watermilfoil in

our lake and the Asiatic carp, which has now reached the St-Lawrence river, and the aggressive spreading of various invasive terrestrial plants, such as European common reed, Japanese knotweed and giant pigweed.

To meet these challenges, MCI depends on the acquisition of credible scientific knowledge to better understand the state of our lake. Close collaboration with other environmental organizations in the region is key. Our participation on the International Joint Commission (IJC) is a good example of a collaboration which allows us to enhance our knowledge of the region. This provides credibility when we need to acquire funds for the protection of our lake, which, don't forget, is an important source of drinking water.

To be successful, we must maintain, value and diversify our partnerships with the different actors in the field, be they municipalities, the MRC and other regional, national, and even international associations, notably with the State of Vermont, so that together we can ensure the environmental health of lake Memphremagog and its watershed. 🍃

**Christian Laporte**  
MCI Co-President



This newsletter contains 100 %  
post-consumer fiber paper.



# 2018 PATROL

MCI is pleased to welcome Santiago Doyon for the second year, this year as patrol coordinator. He will be supervising the work of Maxime Veillette and Anthony Galvin-Bisson, both University of Sherbrooke students. This season, the patrol will continue its normal work monitoring water quality: with the MDDELCC at 10 locations on the lake, with the MRC in the Fitch Bay tributaries, and with the City of Magog at the public beaches.

Several other projects are planned for this summer. The patrollers will be participating in an inventory of Bobolinks and Meadowlarks, two threatened avian species, within the Fitch Bay watershed. These inventories

will be conducted in collaboration with a master's level student in International Ecology at the University of Sherbrooke. They will also participate in phragmite control activities in Fitch Bay and continue their awareness campaign with shoreline residents.

Please contact the patrol by telephone or text at 819 620-3939, by email at [patrol@memphremagog.org](mailto:patrol@memphremagog.org) or via MCI's Facebook page with any questions or comments you may have.

**Catherine Roy, B.Sc., M.Env.**  
*Vice-President and patrol supervisor*



Maxime Veillette, Santiago Doyon and Anthony Galvin-Bisson

## A LOOK BACK AT SUMMER 2017

Working with the Hydrographic Service of Canada, the patrollers updated the bathymetric map of Fitch Bay. The data was collected over two weeks last summer, and the analysis of the data was completed in the fall.

One of the patrollers, Alexandre Borduas, spent part of his time working on MCI's database to prepare a series of maps, including one showing the evolution of phosphorus and chlorophyll a in the lake between 1999 and 2016. Another study, carried out by Gabriel Provencher, involved calculating the levels of pollution in 8 tributaries of the lake, using the Global Standardized Biological Index (GSBI) as well as the Habitat Suitability Index (HIS).

In collaboration with Nature Conservancy Canada, the patrollers ran a campaign to encourage the residents of the area to report on turtles in the Lake Memphremagog watershed. The aim was to map the distribution of the different turtle species in the region to identify threats to their survival and to protect their habitat.

These studies can be found on our web site at: <http://www.memphremagog.org>

**Louis-Philippe Cyr, B.Env.**  
*2017 Patrol Coordinator*

## Good practices to adopt to ensure the health of the lake and its watershed

### Watershed residents:

- Conserve natural landscapes of ecological interest on your property (consult with MCI to learn more about conservation options);
- Maintain a shoreline buffer zone of 10 to 15 m or more;
- Renaturalize your shoreline with trees, shrubs and grasses;
- Completely cover artificial shorelines (rock or concrete walls, etc.) with vegetation;
- Maintain forest cover over at least 75% of the area of your property;
- Avoid putting in roads that break up large blocks of forest;
- Adopt sound management practices on your private roads (see p. 7);
- Favour ecological maintenance of lawns and flower beds;
- Stop using fertilizers and pesticides in shoreline buffer zones;
- Choose biodegradable cleaning products without phosphates;
- Check, maintain and correct as needed the functioning of your septic system;
- Note any turtle sightings at the Nature Conservancy's Carapace.ca website;
- Note any sightings of exotic invasive species at MDDELCC's Sentinelles website (see p.8);
- Advise MCI of any cyanobacteria blooms.

### Boaters

- Ensure that your boat is properly power washed before putting it in the water to avoid the spread of invasive species;
- Keep your distance from aquatic grass beds and do not feed fish or birds;
- Respect the speed limits on the lake: the speed limit is 10 km/h (6 mi/h) within 100 m of the shore;
- Practice water sports that generate oversized waves in areas at least 250 m from shore and in areas that are more than 5 m deep;
- Dispose of garbage, sewage and grey water in locations designated for that purpose;
- Avoid spilling fuel when filling tanks and opt for a boat with a system that prevents the spilling of fuel;
- Keep the noise (both sound system and motor) down.

# A Second Nature Reserve for Memphremagog Conservation!

A new protected area, the *Powell Creek private nature reserve (Lacasse-Benoit sector)* has recently been created in the Lake Memphremagog watershed. This 14.7-hectare private nature reserve is situated in the municipality of Austin along Powell creek, near Sargent's Bay on Lake Memphremagog.

## AN UNDENIABLY RICH SITE NOW PROTECTED!

Powell creek and another stream that crosses the property are important elements for the conservation of water quality, as are the wetlands, tree swamps and deciduous forests, primarily sugar maple.

These habitats, aquatic, shoreline, wetland and forest, possess an undeniable richness of flora and fauna. More than 130 plant species can be found on the property, some of which are rare or vulnerable to harvesting such as the butternut tree, the broadleaf toothwort, the northern maidenhair fern and the ostrich fern. More than 20 species of fauna are also present, the most rare being the northern dusky salamander, susceptible to being designated threatened or vulnerable.

The creation of the *Powell Creek private nature reserve (Lacasse-Benoit sector)* is an example of protecting biodiversity while maintaining light use which does no harm to the environment.

In fact, the owners can continue most of their activities while avoiding certain things such as industrial or commercial exploitation of natural resources, filling, digging, draining or drying out certain areas, and the construction of roads or buildings. And, since the reserve is private, there is no public access.

## A GREAT FAMILY STORY!

The owners, Gisèle Lacasse and Robert Benoit, with the enthusiastic support of their daughters and grandchildren, have decided to commit to conserving a part of their property forever.

*'Environmental protection, and more specifically the protection of Lake Memphremagog and its watershed, has always been a priority for us. We have lived here for many years and are very attached to our property and our community. We created this reserve to*

*ensure the protection of a forest and a wetland and of all the ecological roles they serve: protection of habitat and of rare flora and fauna, purification of the air, stabilization of the soil, holding back rainwater and reducing the impacts of heavy rains. But most importantly for us is the ecological role of this land in protecting the quality of the water of Powell creek, the third largest tributary of Lake Memphremagog on the Canadian side. With this gesture, our family is happy to contribute to the protection, in perpetuity, of a small part of the Lake Memphremagog watershed.'*

This is the second private nature reserve recognized by the government of Québec thanks to the efforts of Memphremagog Conservation. Since 2009, MCI, with its conservation program, has contributed to the protection of 792 hectares.



Lacasse-Benoit Family. From left to right : Robert Benoit, Gisèle Lacasse, their grandchildren and daughters, Marine, Félix, Elyes, Chady, Valérie and Catherine.

## MCI's conservation program

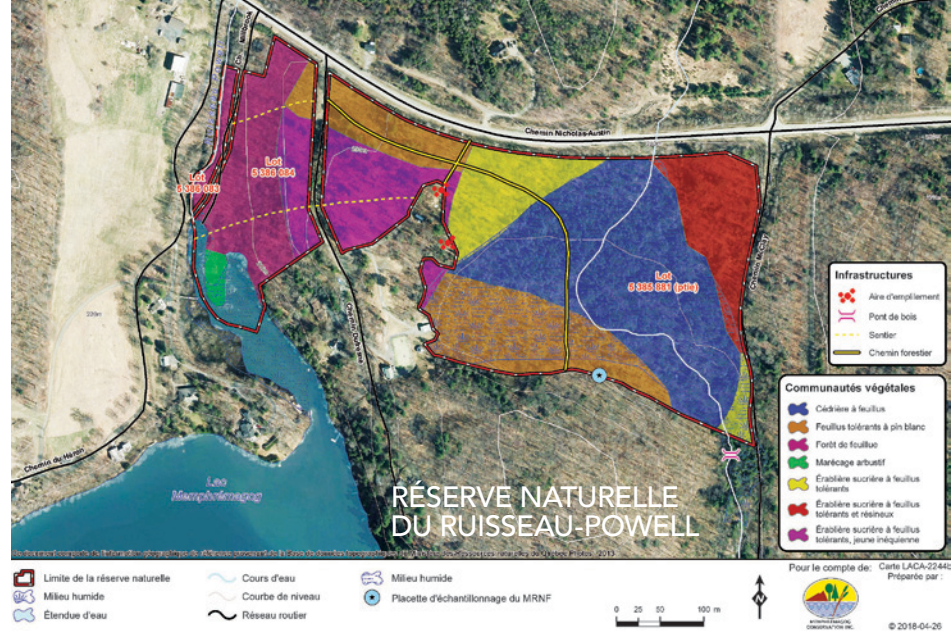
MCI believes that it is possible to reconcile conservation and land usage without interfering with the socio-economic development of the region, which is based, to a great extent, on the exceptional natural richness of the land. MCI counts on the voluntary participation of private property owners, by means of conservation agreements. It also counts on the participation of the municipalities, who have an important, and growing, role in the area of environmental protection.

In 2017-2018, MCI has continued to sensitize and work with property owners in the conservation of natural landscapes on their property. This has been done via the distribution of information pamphlets, individual meetings and carrying out ecological evaluations of properties. As well, in collaboration with the City of Magog, a complex of wetlands has been identified and mapped in the western sector of the city, in order to orient the future development of the area, while taking into consideration the conservation of these sensitive areas. All of these activities should lead to the creation of protected areas.



The conservation of natural landscapes within the Lake Memphremagog watershed will ensure the protection of its biodiversity and the water quality of the lake, an important source of drinking water for many citizens of the region, including the Cities of Sherbrooke and Magog, for the short, medium and long term. It also maintains the beauty of the landscapes and the quality of life of the citizens.

The actions of the Lacasse-Benoit family are part of a larger vision of conservation and they encourage other property owners to do the same for their own quality of life, but mostly for future generations. Every property



owner has a responsibility to preserve the environment beyond their own property, and every action counts! 🍀

**Francine Hone,**  
*Biologist*

## Conservation for all!

Conservation is within reach of all private property owners. It speaks to all those who have developed a deep attachment to their land and its natural riches, and who wish to leave this heritage to the future generations. Conservation does not mean that we can no longer use our property! In fact, balance and common sense must influence the choices we make. As each property is different, we must ensure, first of all, that the activities and uses to which the land is put are compatible with the environment, the ecosystems and their ecological functions.

A number of legal conservation options are available to property owners, and can offer certain fiscal or property tax advantages. These options include private nature reserves, conservation servitudes and donation or sale of the property or a part thereof.

### MCI can help!

If you would like more information on private nature reserves or other conservation options, MCI will be glad to answer your questions.

For more information on conservation options, visit our website:  
<http://www.memphremagog.org>

**Or contact us:** Telephone: 819 620-3939  
Email: [conservation@memphremagog.org](mailto:conservation@memphremagog.org)  
P.O. Box 70, Magog (Quebec) J1X 3W7



Wetland - Credit: Isabelle Picard

## LAW CONCERNING THE CONSERVATION OF WETLANDS AND AQUATIC ENVIRONMENTS

The government of Québec adopted law 132 on June 16, 2017, which gives protected status to specific wetlands and aquatic environments. As well, 'aquatic and wetland environments' are clearly defined, and the concept of 'no net loss of aquatic environments or wetlands' is integrated into the law. This means that wetlands of interest are absolutely protected and that any encroachment must be fully offset by the creation of new wetlands. Though this is a gain for the protection of aquatic and wetland habitats, MCI believes that all wetlands should be protected, for they all have a fundamental role to play for the protection of water and biodiversity, and to help adapt to climate change.

For more information: <http://www.mddelcc.gouv.qc.ca/eau/milieux-humides/loi.htm>



# Healthy Fitch Bay Project

MCI is entering the fourth year of work on this project, in collaboration with the municipalities of Stanstead Township and Ogden, as well as several other partners. Since 2015, a series of activities aimed at improving the quality of the bay's water and conserving the biodiversity of the bay's watershed have taken place. Remember that the quality of the water of this part of the lake is of particular concern and that its biodiversity is of great ecological importance for Lake Memphremagog and the region.

## BATHYMETRY OF FITCH BAY

In 2012, the bathymetry of Lake Memphremagog was carried out by the Hydrographic Service of Canada. However, Fitch Bay was left out of this study. Thus, in 2017, MCI's patrollers, in collaboration with the Hydrographic Service of Canada, carried out the bathymetry for the bay and updated the bathymetric map of the lake. These new data show that the bay is shallower than indicated in previous bathymetric maps. The average depth of the bay is 3.1 m and it is 5.8 m at its deepest. Remember that the bottom of the bay is made up of a thick layer of fine sediments. Because of its shallowness and its muddy bottom, motor boats, by stirring up the bottom sediments, can contribute to the premature ageing of the bay, especially in the shallower areas and especially by the practice of wake surfing, which generates over sized waves.

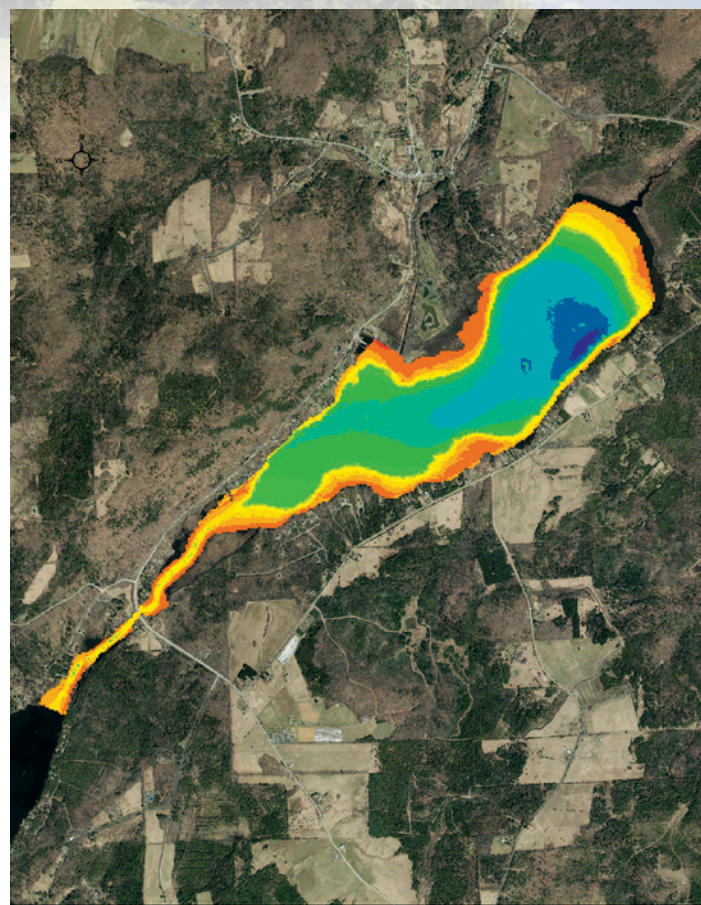
## CONSERVING AGRICULTURAL SOILS IN THE FITCH BAY WATERSHED

We wish to highlight the participation of farmers via a project to conserve agricultural soils in the watershed. This project is part of subsection 3.1 of the Prime-vert 2013-2018 project, which received funding from the Agriculture and Fisheries ministry (MAPAQ). The watershed's farmers have access to a free erosion analysis of their agricultural fields and subsidies to help them adopt soil conservation measures. Since the beginning of this project in the summer of 2016, 6 erosion analyses have been carried out on 54 agricultural fields covering a total of 294 ha!

The coming year will concentrate on carrying out more erosion analyses and working with farmers to adopt new crop practices.

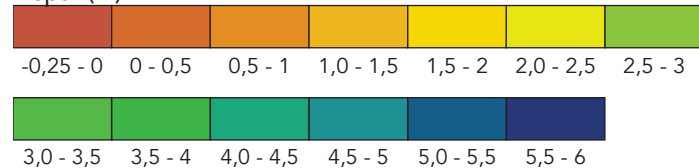
For more information on the project, farmers are invited to contact Stéphanie Durand of the Club agroenvironnemental de l'Estrie at 819 820-8620 ext. 32.

**Ariane Orjikh**, *Biologist and General Manager*



0 0,25 0,5 1 Kilometers

Depth (m)



Sources:

- Data: Hydrographic Service of Canada (HSC, 2017)
- 2013 Aerial photos: This document contains reference information from the Ministry of Natural Resources of Québec's topographic database



# ■ My Road, my Lake, My Responsibility!

Are you the owner of a private road? By taking care of it properly, you can contribute to the health of Lake Memphremagog!

## WHY SHOULD I MAINTAIN MY PRIVATE ROAD?

Poor maintenance of roadside ditches causes erosion, leading to silting of waterways and the transport of nutrients, resulting in the premature aging of lakes. The application of de-icing salts also causes water quality problems and has a negative impact on biodiversity. Improperly installed or maintained culverts can impede the movement of animals such as fish and turtles. Proper maintenance of your private road thus contributes to the health of Lake Memphremagog and the maintenance of biodiversity.



Erosion of a culvert



Ditch without vegetative cover

Photo credits: Léa Aubé, Flavie Gauthier Chamard, Joé St-Germain, Christopher Plourde-Tremblay and Étienne Poisson

Thanks to Léa Aubé, Flavie Gauthier Chamard, Joé St-Germain, Christopher Plourde-Tremblay and Étienne Poisson for their contribution. In collaboration with the municipality of Ogden and MCI, these University of Sherbrooke students have analyzed the road maintenance practices in the municipality and made recommendations to ensure that these practices are respectful of the environment.

Anaïs Messier, *B.Env.*

## WHAT SHOULD I DO?

- ✓ First, ensure the maintenance of vegetation and avoid paving your driveway; this will facilitate the percolation of water into the soil;
- ✓ Level your road regularly, ideally in spring and after heavy rains, to allow normal flow of water into the ditches and to limit the movement of sediments;
- ✓ Ensure that all culverts are clear and stable. Stabilize the outflow with vegetation and/or rocks to reduce erosion;
- ✓ If a culvert crosses a waterway, ensure that it allows the free movement of fish and other fauna;
- ✓ When maintaining ditches, opt for the bottom third method, and cut back vegetation to no less than 10 cm high to avoid exposing bare soil;
- ✓ Use alternative de-icing products rather than salt, such as potassium acetate, or choose an abrasive material such as gravel or sand. In any case, limit your use of these products as much as possible to reduce water pollution;
- ✓ Avoid spreading Japanese knotweed and European common reed, two exotic invasive species found in the region. Cut or completely remove the stems and roots and dispose of the material either in garbage bags or by burning.

## MCI Board of Directors 2017-2018

**Robert Benoit**  
Co-president

**Christian Laporte**  
Co-president

**Catherine Roy**  
Vice-president  
& Secretary

**Peter Lepine**  
Vice-president

**Johanne Lavoie**  
Treasurer

**Jean-Claude Duff**  
Board Chairman

**Mary Pat Goulding**  
**Charles Guay**

**Tom Kovacs**  
**Gisèle Lacasse Benoit**  
**Sandra Marshall**  
**Erich Smith-Peter**

**Ariane Orjikh**  
General Manager

**Cindy Margarita Pozo**  
Administrative Assistant

**Observers**  
Louis-Philippe Cyr  
Élaura Martel  
Gabriel Provencher

**Collaborators**  
François Bélanger, eng.  
Francine Hone, biologist

## Project studying the water quality of Lake Memphremagog with the International Joint Committee

MCI will take part in a project aimed at pinpointing the problems linked to nutrients in Lake Memphremagog via a report touching on the state of the watershed, existing research and management efforts.

This 2-year project, undertaken in collaboration with the *International Joint Committee (IJC) and Memphremagog Watershed Association (MWA)* on both sides of the border, will collate all the data available on nutrients in the Lake Memphremagog watershed. Consultation with various experts and a literature review will allow for the identification of the issues related to water quality and the development of recommendations to consolidate existing efforts to reduce phosphorous concentrations and the proliferation of aquatic plants and cyanobacteria. Preliminary results from this study will be available online for public consultation next year.

## Controlling exotic invasive species: get involved!

The presence of exotic invasive species, both flora and fauna, has become a threat to the biodiversity of Lake Memphremagog and its watershed. The identification and location of these species is a first step to understanding the scope of the problem and identifying solutions.

Help us detect these exotic invasive species using the Sentinelle app, created by the MDDELCC. It provides access to any observations in your area as well as detailed descriptions of the exotic invasive species of most concern here in Québec.

To upload an observation, create an account at the following website: [www.pub.mddefp.gouv.qc.ca/scc](http://www.pub.mddefp.gouv.qc.ca/scc) or download the mobile Sentinelle app.



On a similar note, control activities for phragmite, or European common reed, will continue in the north-east sector of Fitch Bay. Follow up by MCI shows that the efforts of the past years

have yielded results. The placement in 2016 of a membrane covering the site of a phragmite colony at Forand park has prevented regrowth of this invasive species. On the east side of the bay, plants have been cut manually to prevent them from spreading into adjacent wetlands.

You are invited to join MCI's team to help protect the richly biodiverse Fitch Bay from invasion by phragmites. The next control activities will take place Saturday July 28<sup>th</sup> and Tuesday August 7<sup>th</sup>. Please confirm your presence by email to [info@memphremagog.org](mailto:info@memphremagog.org).

**Thanks to all the volunteers who have contributed to the protection of our biodiversity!**

Anaïs Messier, *B.Env.*



A phragmite colony at Forand park before being cut.





Photo : Eastern Townships Excellence in Environment gala

## MCI recognized for its environmental work!

On November 7, 2017, MCI received the *Prix d'excellence Michel Ledoux* at the Eastern Townships Excellence in Environment gala for its 50 years of contributing to the protection of Lake Memphremagog.

We thank the Eastern Townships Environment Foundation for this prestigious prize and the Eastern Townships Regional Environment Council for organizing the gala.

We thank the founders of MCI, all of the administrators who have worked with MCI over the years and our members, who have allowed us to carry out many actions and projects to ensure the health of Lake Memphremagog.

MCI's 50 years have seen many initiatives, from small gestures to large battles, all carried out tenaciously and with a positive attitude, conviction and enthusiasm. Today, the work

continues! Proud of our origins, our accomplishments and our 1,200 members, MCI continues to promote good environmental practices, apply solutions on the ground, be present in the 6 lakeside municipalities and invest in organizations that defend the environment.

## The 2017 MCI Gordon Kohl Memorial Award Presentation to the Penfield Family

The MCI Gordon Kohl Memorial Award is given in recognition of outstanding contribution in the preservation of the natural environment. Its first recipient was Stewart Hopps in 2005. Other recipients have included Jacques Boisvert, Donald Fisher, Francois Bélanger and Gisèle Lacasse Benoit.

The year 2017 marked the first occasion that the award is presented to a family, the Penfields, instead of to an individual. Much of the following is gleaned from a brochure penned by Kate Williams and Wilder Graves Penfield III.

The best-known member of the Penfield family is Wilder Graves Penfield. MCI, however, wished to give recognition to the three generations of Penfields, such an important and integral part of the municipality of Austin and lake Memphremagog. This large family includes Roger Williams and Wilder Lewis Penfield, past presidents of MCI.

Dr. Wilder Penfield's love of Sargent's Bay started shortly after his arrival in Montreal. In 1926, following a camping holiday in the area, Wilder and his wife Helen bought two farms belonging to the Manning family. With magnificent vistas and covering nearly 640 acres, the new property, called Magog Meadows, soon became a treasured family retreat, a centre for year-round outdoor activities, as well as for recreation, writing and reflection. For the four Penfield

children and their offspring, Magog Meadows became integral to their lives. Dr. Penfield died in 1976 and his wife Helen the following year. Their ashes are buried on the family property.

During the early 1990s, the second generation Penfields donated a large part of the two original farms to McGill University thereby creating the Wilder and Helen Penfield Nature Conservancy. A laboratory of the internationally recognized McGill Limnology Research Center was established on it by Dr. Jacob Kalff. The Greene Bay facility is today the main research base for the Limnology Research Center. The family also formed the Meadowlark Beach Association to look after the Nature Reserve.







## HERITAGE CIRCLE MEMBERS

Abbott, William	Caron, Trevor H.	L'Espérance, André	Poulin, Bernard
Agence de communication Bang Marketing	Coughlin, Peter F	Lacasse Benoit, Gisèle	Pradella, François
Anthony, Karen	Couture, Martin	Lambert, Goulding	Ruest, Jean-Jacques
Arbuckle Fisher, Alison	Cyr, Joanne	Normand Lamoureux / Lefko Produits de Plastique Inc.	S.E.C., The Memphremagog Golf Club
Armour, Peter M.	Dandurand, Philippe	Landry, Jean-Luc	Savard, Guy
Auger, François	Davidson, Howard	Lowry, Glenn David	Sirois, Sean
The François Bannerman Family Foundation	deLange, Andrew J	Marcon, Loretta	Spencer, Norman
Benoit, Robert	Desjardins, Jean-Guy	Martel-Gonzalez, Emilie	St Cyr, Roger
Bombardier, J.R. André	Eakin, Gael	Milne, Catherine A.	Straessle, Tony
Brandt, Albert	Gestion André Jacques Dupuy Ltée	Mitchell, William	Talon, Jean-Denis
Cabana, Pierre	Howick, Andrew	Morin, Georges	Thorburn, Cynthia Caron
	Ivory, Joan F.	Poirier, Germain	Wilson, Janet
	Ivory, Sarah		

We would like to thank the municipalities of Austin, Magog, Stanstead Township, Potton and Ogden for their financial contributions.

## A special thanks to Will Abbott and his family

In December 2016, Mr. Abbott decided to celebrate his birthday in a very special way. He organized a party, where, instead of receiving gifts, he, his wife and his children collected money for a worthy cause. He was able to raise \$6,000 for MCI. Many thanks to the Abbott family for their efforts and generosity!

*"Thanks for the work you do on the Lake. In the dead of winter we start looking forward to the upcoming summer at the lake. Whether we are on the water, hiking up Owl's Head, enjoying drinks and appetizers with friends and family on the dock as the loons swim by, it is our favourite place in the world!"*

- Will Abbott & Family.

## SUMMER 2018 CALENDAR

**May 5:** Annual general meeting of RAPPEL

**May 12:** Start of patrol activities on the lake

**May 19:** Tree give-away in Austin, Fitch Bay and Ogden

**May 22:** Québec-Vermont Committee meeting

**May 27:** Tree give-away in Magog

**June 14:** MCI's new bylaws available for consultation online

**June 16:** Conference on the Healthy Fitch Bay project – Stanstead Township town hall

**June 30:** Deadline for providing comments on MCI's bylaws (info@memphremagog.org)

**June 30:** Patrol Kiosk at the Canada Day celebrations in Georgeville

**July 14:** Special general meeting to approve MCI's new bylaws – Murray Memorial Centre, Georgeville

**July 14:** MCI's annual general meeting - Murray Memorial Centre, Georgeville

**July 28:** Phragmite control activity in Fitch Bay

**August 7:** Phragmite control activity in Fitch Bay

**September 2:** End of patrol activities on the lake

**Watch for:** Conferences, kayak excursions, patrol kiosks and more! Contact us for more information!